

Creating great experiences since 1996 in Patagonia



TREKKING
VALLEYS OF THE W



KAYAK
SERRANO RIVER



ICE HIKE
GREY GLACIER

Adventure Patagonia



“Hi Antares, thanks for the great service and support your team provided on our recent Adventure Patagonia ! You cannot under estimate the advantage of having access to local knowledge. Truly outstanding! A special thanks to Alex; our guide, who's knowledge, care and expertise was excellent.”

Justing Friemann

Itinerary

Day 01 Puerto Natales

Our guide will meet you at Punta Arenas airport. Transfer to Puerto Natales, a three-hour drive through the Patagonian pampa. Lodging in Puerto Natales at Natalino hotel or similar. Welcome dinner and meeting to discuss trip program. (D)

Day 02 Torres del Paine

Transfer by van to Torres del Paine National Park. This is a two hour journey crossing the pampa Patagonica. Arrival at Torres del Paine. We will begin trekking to the Ascencio Valley where from above you see the river (of the same name) running wildly past refugio Chileno. After a quick stop here we will continue through a forest of the native Lenga (Beech) trees until reaching the glacial moraine. From here it's a 1 hour trek to the top where the towers appear from nowhere! This trek is spectacular where you get to view the 3 pink granite towers with its glacial lake below that made the park famous. (8 hours round trip, 19 KM). Lodging & dinner at Nash Lodge. (B/L/D)

Day 03 French Valley

Transfer to Pudeto, cross Pehoe lake by catamaran. Trek to the French Valley. This valley, the most beautiful in the park and one of the most unique in the world. Its surrounded by hanging glaciers (where you can see & hear the ice calving off at various intervals) and an amphitheater of granite walls and spires. There are amazing views throughout this trek and the further you trek into the valley the better they become!

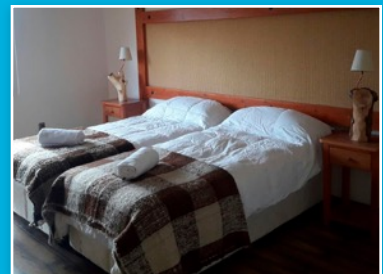
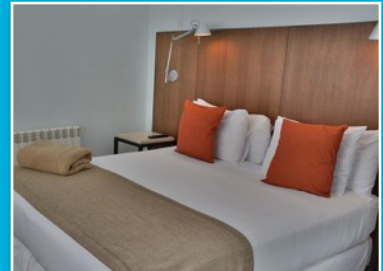
For this day we have two hiking options: *A* consists in getting to further end of the trail, to the British Camp, this is all the way to the end of this natural congregation of mountains. If we reach this point, we will have completed 24km and 7-8 hours hiking. *B* consists on reaching to the French Valley Main Lookout, from this point you can appreciate the whole natural amphitheater created by glaciers millions of years ago, it is absolutely breathtaking. If you take Plan B, you will have hiked for 5-6 hours and completed 16km. The options will depend on fitness level, timing and weather conditions. Cross Pehoe lake by Catamaran, lodging and dinner at Nash Serrano Lodge. (B/L/D)

Day 04 Grey glacier, Kayaking

Transfer to Pudeto, cross Pehoe lake by catamaran. Trek along enchanting Lake Grey (3-4 hours, 11 KM) with magnificent views of Glacier Grey and floating icebergs. Visit to the glacier lookout point and to the lakeshore for up close views of vibrant-blue icebergs (Paine is a Tehuelche Indian word for "blue").

Kayaking; short walk to Bigfoot Patagonia basecamp, located on the northeast coast of Lake Grey. Here our guides introduce us to the equipment needed for the tour and we will have a safety briefing. After this, we will carry the **kayaks** approximately 20 meters to the lakes' edge. Now the tour really begins! We will be paddling around icebergs that are floating in the lake and afterwards we paddle towards the eastern side of the Grey Glacier to wonder at the spectacular scenery in this special place. If conditions permit, we can paddle closer to the glacier to get a really good view. After this, we will paddle back to the start point. Dinner at Grey lodge, accommodation at lodge or camping. (B/L/D)

Puerto Natales & Torres del Paine Accommodation



Services Include

- Accommodation
- All Meals
- Private Guide
- Private Transportation
- Excursions
- Park Entrance Fees

Not Included

- Airfare
- Beverage during meals
- Insurance
- Gratuities

How to carry personal gear:

Please be aware, on day 3 of the trip you will carry your pack everyday which will be around 10kg. Items you will need to carry include: your clothes for the trip, lunch for the day and any other personal items. If you would like a porter, there will be an extra cost of U\$ 120 per day. Each porter can carry 15 kg max, which means that one porter can be used by two trekkers.

Day 05 Grey glacier, Ice Hiking

Ice Hike; After breakfast, the guides will have an introductory chat, and explain the route, the time the tour will take and also test the equipment, and adjust it correctly for each passenger. Then, we go in a zodiac boat for 15 minutes until we reach the west side of the Grey Glacier. On arrival, we will disembark on the island at the glacier (nunatak) and we will walk on it for about an hour until we reach the ice. Before walking onto the glacier, the guide will talk to us about the safety aspects, and they will explain the techniques of displacement in the ice and the correct use of the equipment. Once the safety briefing is complete we will begin our exploration of the Grey Glacier which will last approximately 3 hours. During this time we will be able to observe cracks, rivers, lagoons and tunnels with their different tones of blue. After 3 hours on the glacier, we return to the zodiac boat and ride back to the base camp.

After lunch navigate in Grey III catamaran. Two hours navigation in this magic lake surrounded by ice bergs where the boat does a circuit right up to the front of the glacier whilst you stand on deck sipping your pisco sour served with glacial ice! Transfer from Grey lake to Serrano river. Dinner and night at Nash Lodge. (B/L/D)

Day 06 Kayaking Serrano River

Your trip will begin at our Nash Serrano Lodge. Here we will prepare and distribute the kayaks and begin with the safety and paddling instructions. Our guides will help to recommend the appropriate equipment you will need to take during the trip and the rest of your luggage will be taken directly to Puerto Natales by a private transfer and will be stored in the Antares Patagonia office. This day start with one hour paddling across the first section of the Serrano river, this is a calm zone and gives us the opportunity to see and assess the level and comfort of kayakers during paddling. The first team activity will take place on arrival at a small waterfall in the river and we will carry the kayaks roughly 100 meters. After that we will continue paddling alongside National Park lands & privately owned lands and in these we will see the typical cold forest vegetation of Magallanes & the associated fauna. We will also be able to observe from a distance, the glaciers of the Southern Patagonian ice field. At the end of the day, the encounter with the "Ultimo Esperanza" fjord always offers a touch of adrenaline with its waves.

Finally we will arrive at Puerto Toro (Bernardo O'higgins National Park), our camp base here is in middle of the forrest with a beautiful view of Serrano glacier.

Day 07 Kayaking Serrano Glacier

With an early start and depending on the weather conditions, we will carry the kayaks 100m to the lagoon of the Serrano glacier to paddle in & amongst the icebergs until 11:00am. We will have enough time to pack away the camp, before boarding the boat, which departs at 13:00 (either the 21 de Mayo or Tonina catamaran). We will stop off in a local ranch to enjoy a farewell BBQ. Arrival at Puerto Natales will be 17:00 hrs approx. Farewell dinner and night at Natalino hotel or similar. (B/L/D)

Day 08 Punta Arenas

Transfer to Punta Arenas airport. End of trip. (B)